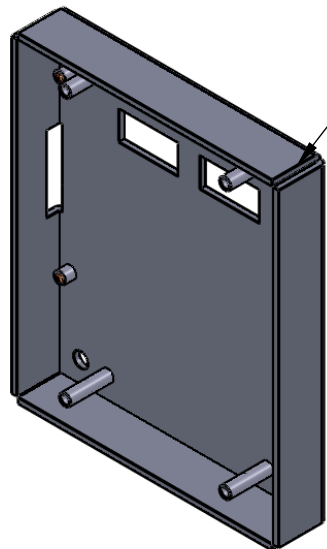
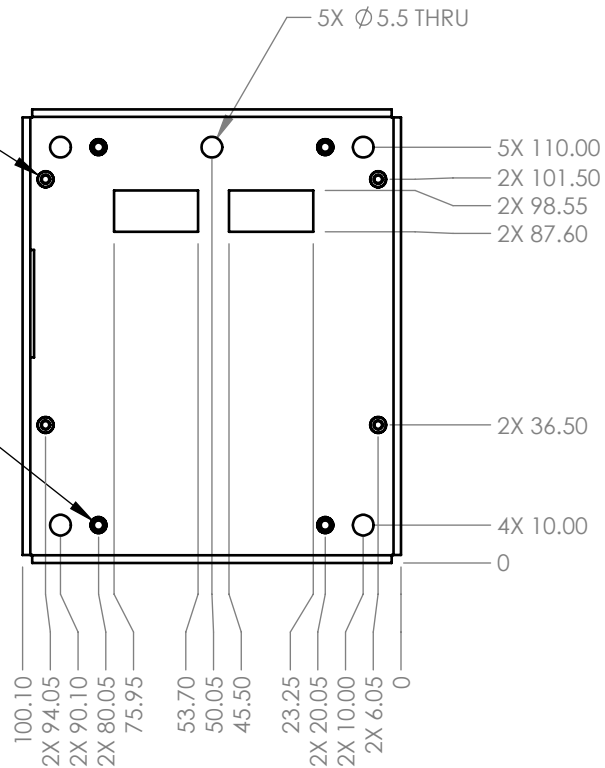


4X TSO-M25-600ZI Inserts  
Install from other side

4X SO-M3-18Z Inserts  
Install from other side



SEAM WELD AND GRIND  
ALL 4 CORNERS

Notes:

1. Material: RoHS compliant 12AWG (.08") Aluminum
2. Finish; Consistent D.A. sand on all exterior surfaces prior to anodize.
3. Finish; Black Anodize, Type II. Mask all threads prior to coating.

DRAWN BY SINNEMA	6/17/13
MATERIAL SEE NOTES	
UNLESS OTHERWISE SPECIFIED DIMENSIONS ARE IN MILLIMETERS. TOLERANCES ARE:	
DECIMALS .X ± .75 .XX ± .25 .XXX ± .125 .XXXX ± .050	ANGLES X° ± 1°  63
BREAK EDGES .005/.020 FILLET RADIUS .005/.020	



Sinnema Design Services

seth.sinnema@gmail.com  
Phone: (303) 250-8218  
Fax: 1-267-393-7872

TITLE <b>LCD cover back</b>	
SIZE A	DWG NO. PP-FP0009
SCALE 1:2	DO NOT SCALE DRAWING
SHEET 1 OF 1	REV. A