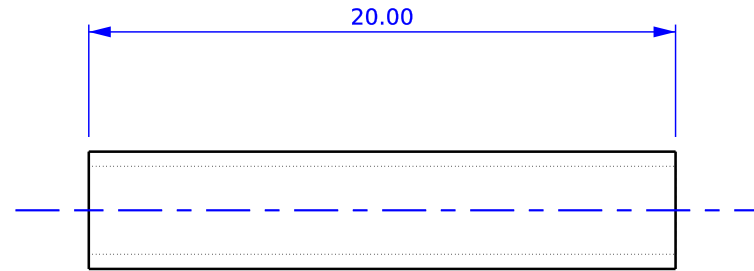
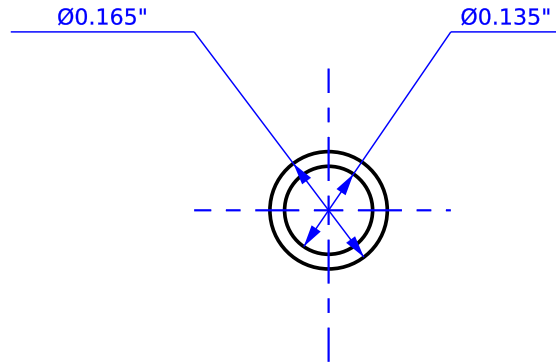
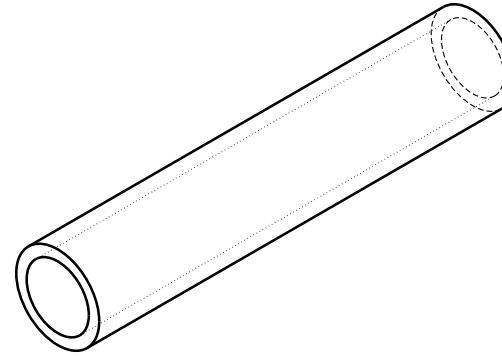



**NOTES:**

- Parts must be clean and free of oil an debris
- Parts must be ROHS compliant
- Break all sharp edges
- Use McMaster 8988K15 or similar for stock



REV	INIT	DATE	NOTES
A	BJB	9/5/2017	Changed tolereance of 20mm length

DRAWN BY: <b>BALDWIN</b>		DATE: <b>7/17/17</b>		 <b>ALEPH OBJECTS</b> INCORPORATED	626 West 66th Street Loveland, Colorado 80538, USA Phone +1-970-377-1111 www.alephobjects.com	
MATERIAL: <b>304 stainless</b>						
UNLESS OTHERWISE SPECIFIED DIMENSIONS ARE IN MILLIMETERS. TOLERANCES ARE:						
DECIMALS	ANGLES					
.X±.75	X°±1°					
.XX±.25						
.XXX±.125						
.XXXX±.050	63					
BREAK EDGES 0.1/0.5 FILLET RADIUS 0.1/0.5						
TITLE <b>screw_collar_20mm</b>						
SIZE <b>A</b>	DWG NO. <b>PP-MP0182</b>					REV. <b>IR</b>
SCALE <b>N/A</b>	<b>DO NOT SCALE DRAWING</b>		SHEET <b>1 of 1</b>			