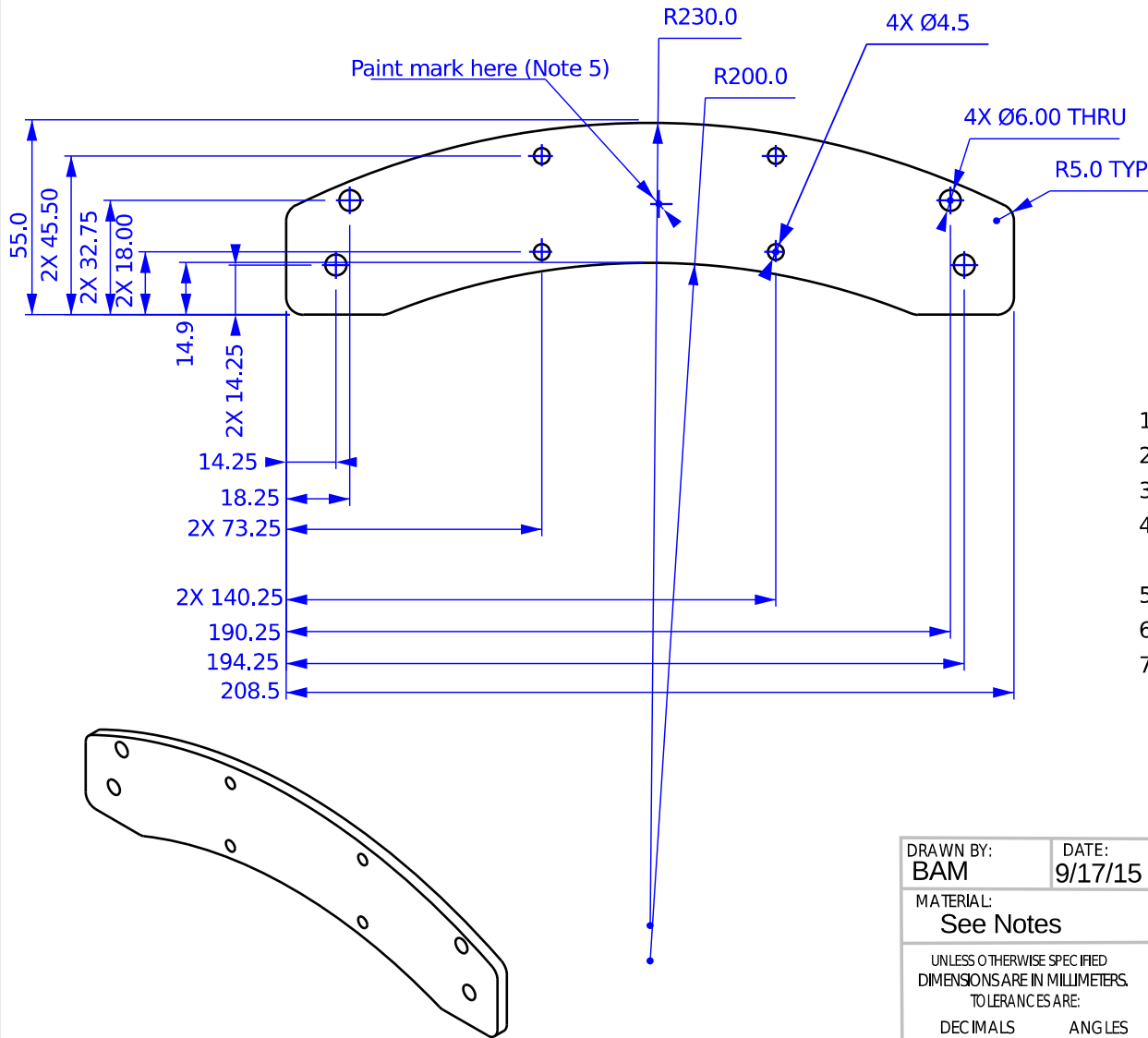
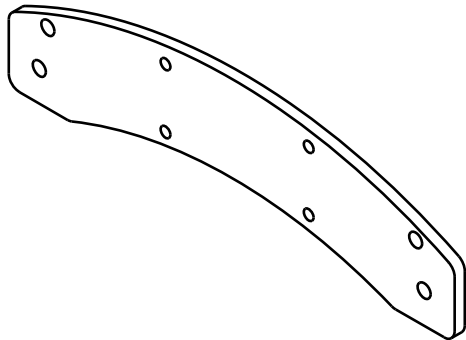


Rev	Description
IR	Initial release for Mangrove/nutmeg builds
A	Feature added for identifying correct side of part
B	Feature changed to ink stamp
C	Changed powder coat thickness tolerance
D	Removed references to theoretical points. Added notes 6,7
E	Changed 4X Ø4.0 to Ø4.5



Notes:

1. Parts must be RoHS compliant.
2. Material: 5052 H-32 Aluminum.
3. Break all sharp edges prior to powder coat.
4. Part is to be powder coated with Cardinal color C241-BK109. Coating thickness: 0.05MM to 0.12MM
5. Stamp part number and manufacturer name.
6. Edge break no greater than R1mm.
7. Unspecified features \triangle 1mm per 3D model



DRAWN BY: BAM	DATE: 9/17/15
MATERIAL: See Notes	
UNLESS OTHERWISE SPECIFIED DIMENSIONS ARE IN MILLIMETERS. TOLERANCES ARE:	
DECIMALS .X±.75 .XX±.25 .XXX±.125 .XXXX±.050	ANGLES X°±1° 63
BREAK EDGES 0.1/0.5 FILLET RADIUS 0.1/0.5	



626 West 66th Street
Loveland, Colorado 80538, USA
Phone +1-970-377-1111
www.alephobjects.com

TITLE Y End Plate, TAZ6			
SIZE A	DWG NO. PP-MP0111	REV. E	
SCALE 1:2	DO NOT SCALE DRAWING	SHEET 1 of 1	