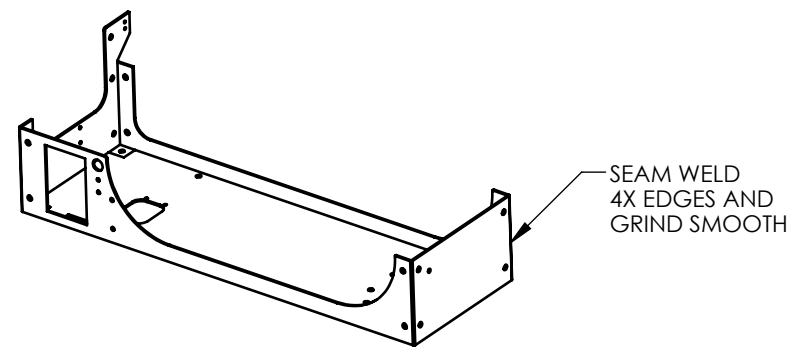


- NOTES:
1. Parts must be RoHS compliant.
  2. Material: 12AWG (.08") Aluminum
  3. Break all sharp edges prior to coating.
  4. Mask all threads and selected areas prior to coating.
  5. Part is to be powder coated with Cardinal color C241-BK109.

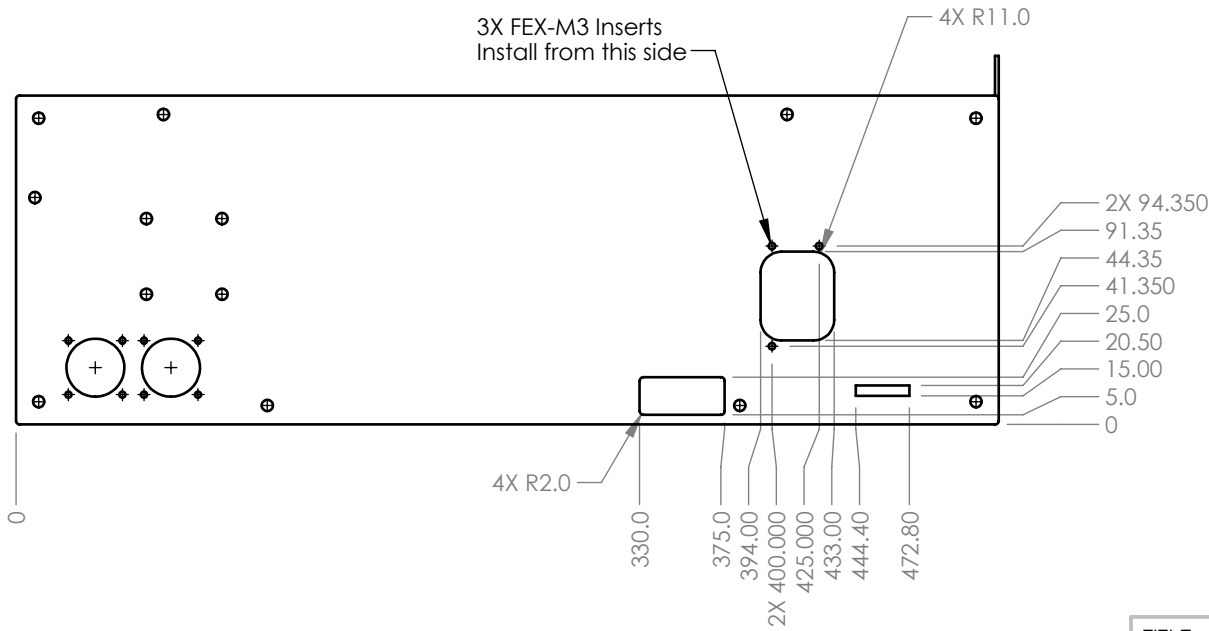
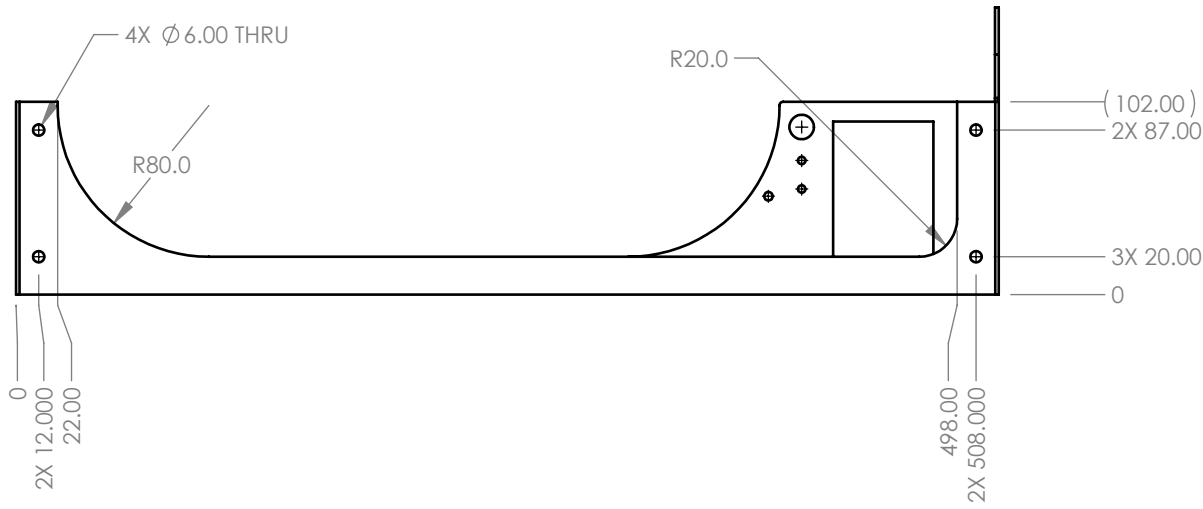


DRAWN BY SINNEMA	3/13/15
MATERIAL SEE NOTES	
UNLESS OTHERWISE SPECIFIED DIMENSIONS ARE IN MILLIMETERS. TOLERANCES ARE:	
DECIMALS	ANGLES
.X ± .75	X° ± 1°
.XX ± .25	
.XXX ± .125	
.XXXX ± .050	63
BREAK EDGES .005/.020 FILLET RADIUS .005/.020	



**Sinnema Design Services**  
 seth.sinnema@gmail.com  
 Phone: (303) 250-8218  
 Fax: 1-267-393-7872

TITLE		Case, left end	
SIZE A	DWG NO. PP-MP0090	REV. IR	
SCALE 1:4	DO NOT SCALE DRAWING	SHEET 1 OF 2	



SECTION A-A

TITLE			
Case, left end			
SIZE A	DWG NO. PP-MP0090		REV. IR
SCALE 1:4	DO NOT SCALE DRAWING	SHEET 2 OF 2	