

12X Ø3.26 THRU FOR #4 SCREW

8X Ø3.26 THRU FOR #4 SCREW

FH-M3-10ZI Insert Install from this side

4X FEX-M3 Inserts Install from other side

- Notes:
1. Material: RoHS compliant 12AWG (.08") Aluminum
  2. Finish; Consistent D.A. sand on all exterior surfaces prior to anodize.
  3. Finish; Black Anodize, Type II. Mask all threads prior to coating.

DRAWN BY SINNEMA	1/9/14
MATERIAL See Notes	
UNLESS OTHERWISE SPECIFIED DIMENSIONS ARE IN MILLIMETERS. TOLERANCES ARE:	
DECIMALS .X ± .75 .XX ± .25 .XXX ± .125 .XXXX ± .050	ANGLES X° ± 1° 63
BREAK EDGES .005/.020 FILLET RADIUS .005/.020	

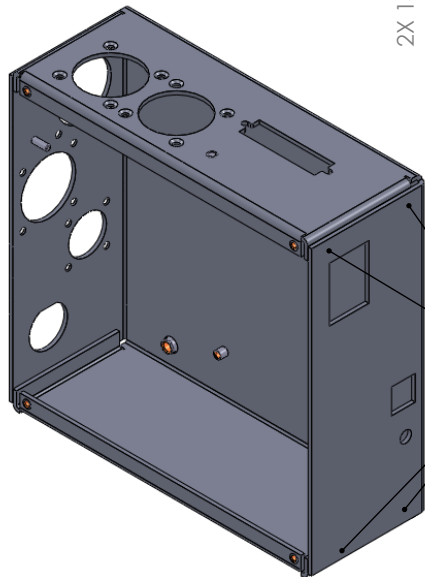
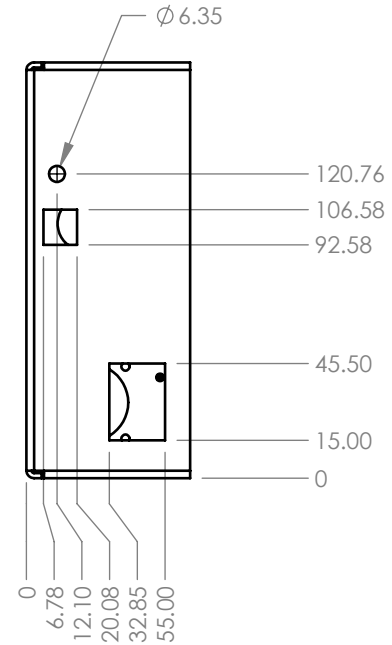
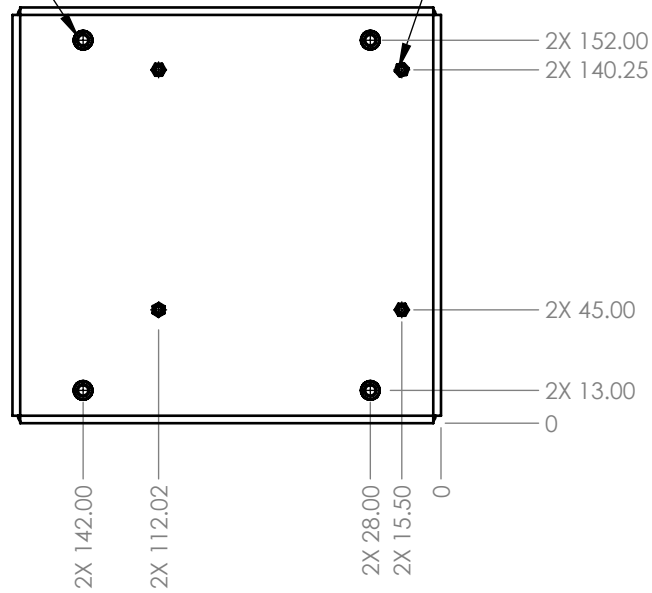


**Sinnema Design Services**  
 seth.sinnema@gmail.com  
 Phone: (303) 250-8218  
 Fax: 1-267-393-7872

TITLE <b>Enclosure, Sheet Metal, TAZ</b>		REV. C
SIZE A	DWG NO. PP-FP0030	
SCALE 1:3	DO NOT SCALE DRAWING	SHEET 1 OF 2

4X FEX-M5 Inserts  
Install from other side

4X SO-M3-6ZI Inserts  
Install from this side



Spot weld 2x on each tab  
or edges may be seam  
welded and ground



Sinnema Design Services

seth.sinnema@gmail.com  
Phone: (303) 250-8218  
Fax: 1-267-393-7872

TITLE

Enclosure, Sheet Metal, TAZ

SIZE  
A

DWG NO.

PP-FP0030

REV.  
C

SCALE

1:2

DO NOT SCALE DRAWING

SHEET

2 OF 2