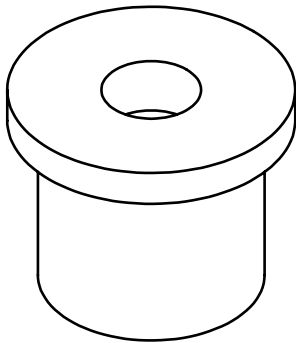
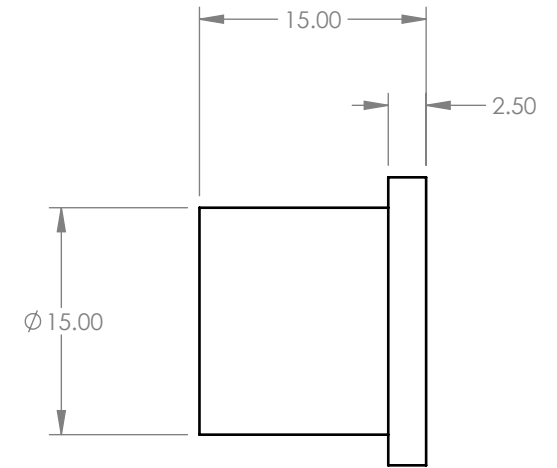
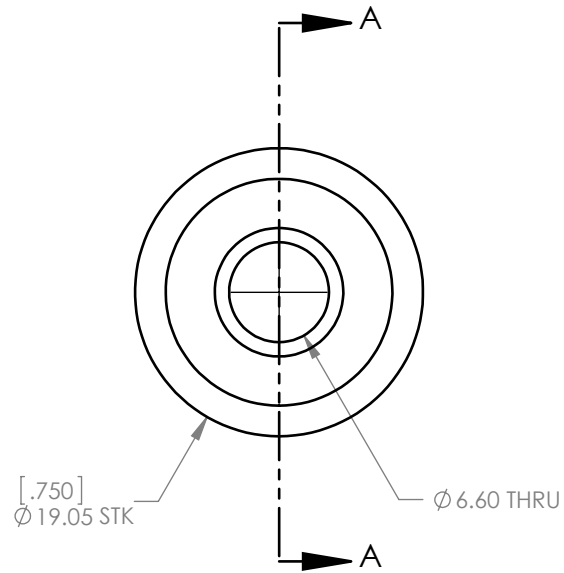


SECTION A-A



NOTES:

1. Parts must be RoHS compliant.
2. Material: PEEK GF30

DRAWN BY  
SINNEMA 1/13/13

MATERIAL  
See Notes

UNLESS OTHERWISE SPECIFIED  
DIMENSIONS ARE IN MILLIMETERS.  
TOLERANCES ARE:

DECIMALS	ANGLES
.X ± .75	X° ± 1°
.XX ± .25	
.XXX ± .125	
.XXXX ± .050	63

BREAK EDGES .005/.020  
FILLET RADIUS .005/.020



Sinnema Design Services

seth.sinnema@gmail.com  
Phone: (303) 250-8218  
Fax: 1-267-393-7872

TITLE

PEEK Isolator V2.0

SIZE  
A

DWG NO. PP-MP0051

REV.  
IR

SCALE

2:1

DO NOT SCALE DRAWING

SHEET

1 OF 1