

# HD-RD0061: 10x405mm Smooth Rod

Oliver Darling

October 24, 2018

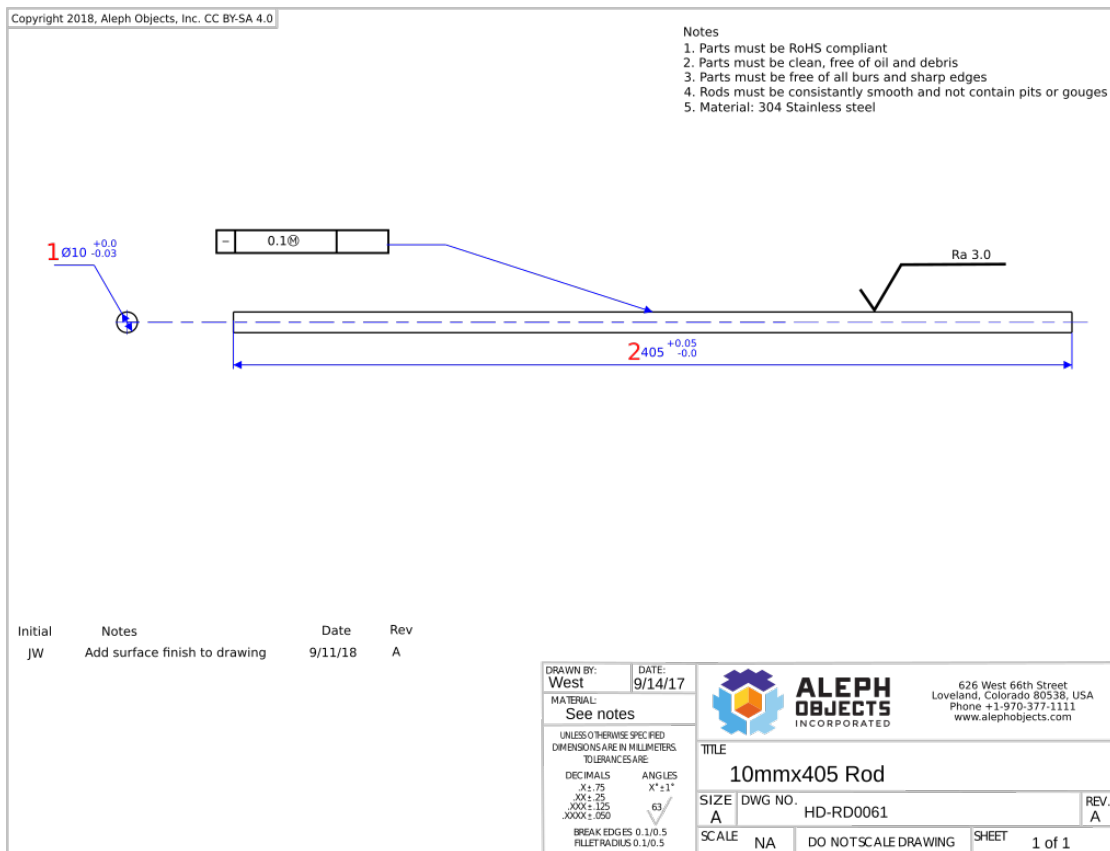


Figure 1: Schematic of HD-RD0061.

## 1 Dimension 01



Figure 2: Dimension 01

Using a micrometer we can check to insure the diameter of the smooth rod is in tolerance, as seen in Figure [2] to  $10\left\{\begin{matrix} +0.0 \\ -0.03 \end{matrix}\right\}mm$ . This results in a upper control limit of  $10.0mm$  and a lower control limit of  $9.97mm$ .

## 2 Dimension 02



Figure 3: Dimension 02

Using the set of large calipers, we can check the length to ensure adherence to tolerance as seen in Figure [3] to  $450\left\{\begin{matrix} +0.05 \\ -0.0 \end{matrix}\right\}mm$ . The results in a upper control limit of  $450.05mm$  and a lower control limit of  $450.0mm$ .