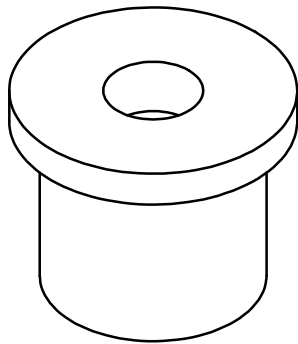
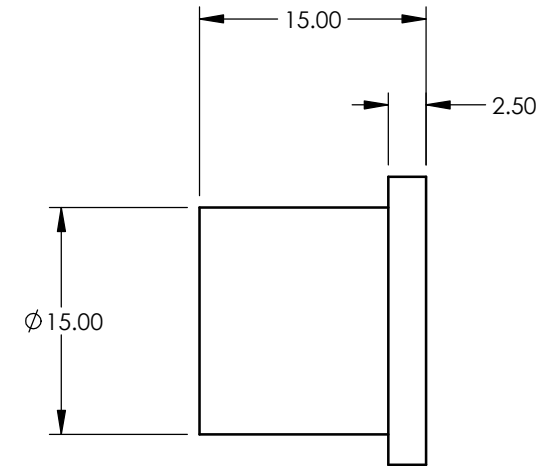
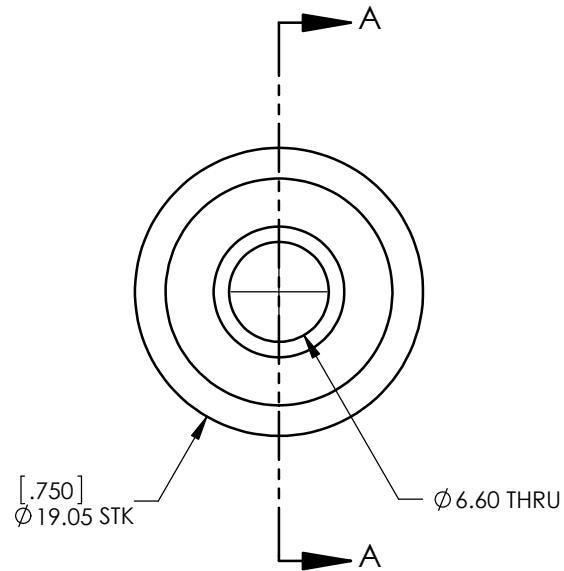


SECTION A-A



NOTES:

1. Parts must be RoHS compliant.
2. Material: PEEK GF30

DRAWN BY SINNEMA	11/28/11
MATERIAL See Notes	
UNLESS OTHERWISE SPECIFIED DIMENSIONS ARE IN MILLIMETERS. TOLERANCES ARE:	
DECIMALS .X ±.75 .XX ±.25 .XXX ±.125 .XXXX ±.050	ANGLES X° ±1°  63 ✓
BREAK EDGES .005/.020 FILLET RADIUS .005/.020	



**Sinnema Design Services**  
 seth.sinnema@gmail.com  
 Phone: (303) 250-8218  
 Fax: 1-267-393-7872

TITLE <b>PEEK Isolator V1.1</b>	
SIZE A	DWG NO.
SCALE 2:1	DO NOT SCALE DRAWING
SHEET 1 OF 1	REV. A