

Rev Date

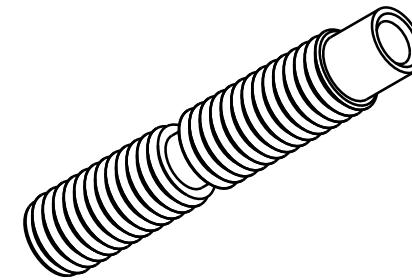
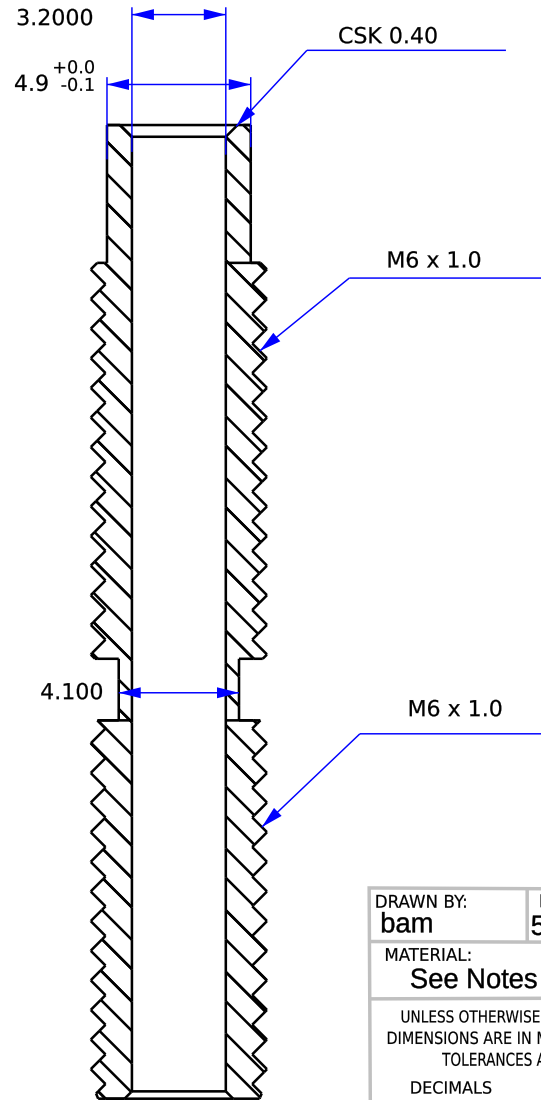
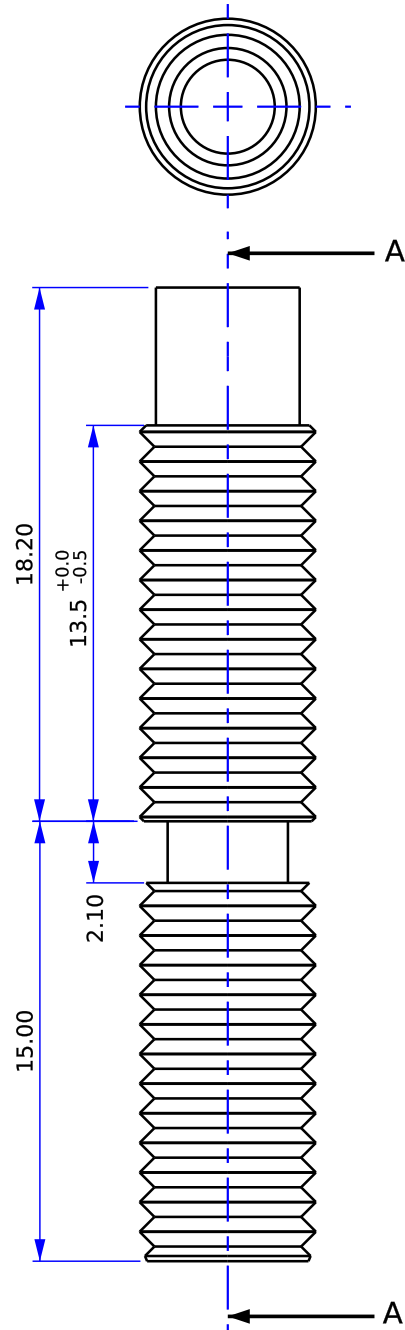
Description

A 10.07.16

Dimensions modified based on mfr. produced samples

IR 05.21.16

Initial release



Notes:

1. Material: 303 Stainless Steel.
2. Parts must be free from debris and oils.
3. Parts must be RoHS compliant.
4. Remove all burrs and shavings.
5. Threads do not need to align.

DRAWN BY: bam	DATE: 5.21.16
MATERIAL: See Notes	
UNLESS OTHERWISE SPECIFIED DIMENSIONS ARE IN MILLIMETERS. TOLERANCES ARE:	
DECIMALS .X±.75 .XX±.25 .XXX±.125 .XXXX±.050	ANGLES X°±1° 63
BREAK EDGES 0.1/0.5 FILLET RADIUS 0.1/0.5	



**ALEPH
OBJECTS**
INCORPORATED

626 West 66th Street
Loveland, Colorado 80538, USA
Phone +1-970-377-1111
www.alephobjects.com

TITLE MOARstruder-heatbreak			
SIZE A	DWG NO. PP-MP0152_revA	REV. A	
SCALE 4:1	DO NOT SCALE DRAWING	SHEET	1 of 1

Section A-A