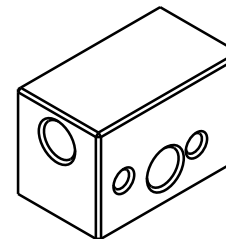
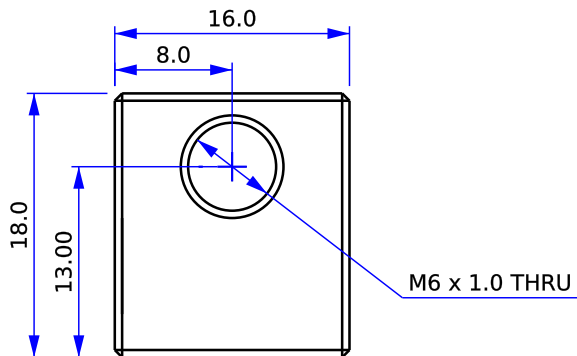
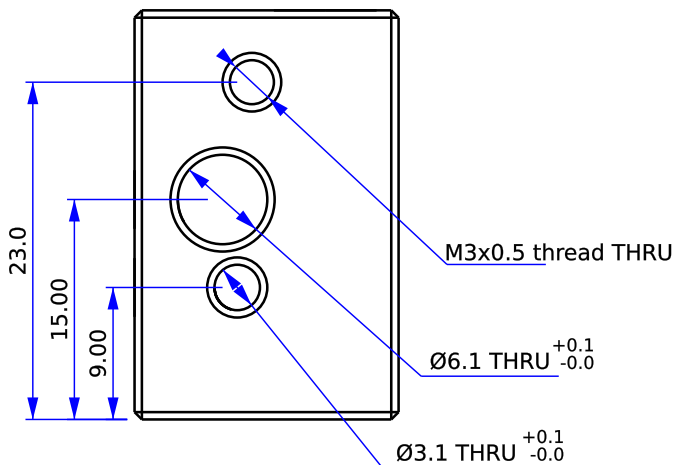
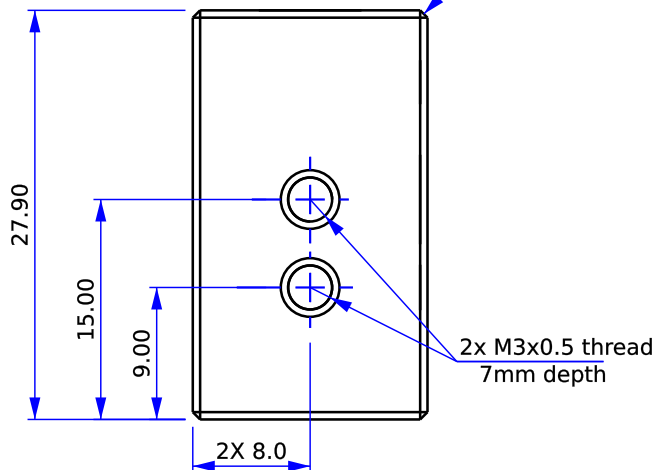


Rev	Date	Description
B	10.07.16	Dimensions modified based on mfr produced samples.
A	09.12.16	Name changed to MOARstruder and laser etching added.
IR	06.21.16	Initial release

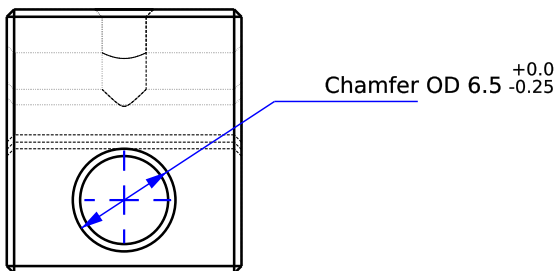


Chamfer all edges and holes 0.5mm unless otherwise noted.



**Notes:**

1. Material: 6061-T6 Aluminum
2. Parts must be RoHS compliant.
3. Remove all burrs and shavings.
4. Clean thoroughly to remove oils.



DRAWN BY: **bam** DATE: **6.21.16**

MATERIAL: **See Notes**

UNLESS OTHERWISE SPECIFIED DIMENSIONS ARE IN MILLIMETERS. TOLERANCES ARE:

DECIMALS	ANGLES
.X±.75	X°±1°
.XX±.25	
.XXX±.125	63
.XXXX±.050	

BREAK EDGES 0.1/0.5  
FILLET RADIUS 0.1/0.5



**ALEPH OBJECTS**  
INCORPORATED

626 West 66th Street  
Loveland, Colorado 80538, USA  
Phone +1-970-377-1111  
www.alephobjects.com

TITLE  
**MOARstruder-heater-block**

SIZE **A** DWG NO. **PP-MP0154\_revB**

REV. **B**

SCALE **2:1** DO NOT SCALE DRAWING SHEET **1 of 1**